

## Human Recombinant HAVCR2 Stable Cell Line

Cat. No.: FCC-130

### ■ Introduction

Cell Line Name:	CHO-K1/HAVCR2
Gene Synonyms:	TIM3; CD366; KIM-3; SPTCL; TIMD3; Tim-3; TIMD-3; HAVcr-2
Expressed Gene:	HAVCR2
Host Cell:	CHO-K1, (ATCC® CCL-61™)
Quantity:	Two vials of frozen cells (>1×10 <sup>6</sup> cells/vial)
Application:	Binding assay or use as immunogen
Cryopreservation Medium:	70% Complete growth medium, 20% FBS, 10% (V/V) DMSO
Complete Growth Medium:	F12K, 10% FBS
Drug Screening:	12 µg/ml Puromycin
Mycoplasma Contamination:	Not detected
Storage:	Liquid nitrogen immediately upon receipt

### ■ Background

The protein encoded by this gene belongs to the immunoglobulin superfamily, and TIM family of proteins. CD4-positive T helper lymphocytes can be divided into types 1 (Th1) and 2 (Th2) on the basis of their cytokine secretion patterns. Th1 cells are involved in cell-mediated immunity to intracellular pathogens and delayed-type hypersensitivity reactions, whereas, Th2 cells are involved in the control of extracellular helminthic infections and the promotion of atopic and allergic diseases. This protein is a Th1-specific cell surface protein that regulates macrophage activation, and inhibits Th1-mediated auto- and alloimmune responses, and promotes immunological tolerance.

■ **Representative Data**

Protein Expression Validation

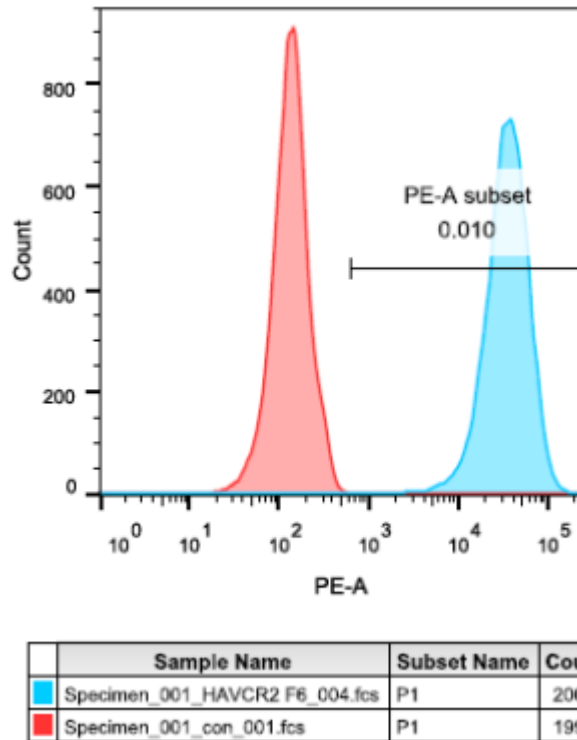


Figure 1: FACS analysis of HAVCR2 expression in CHO-K1/HAVCR2 cells

■ **Cell Culture Procedure**

**1. Complete Growth Medium**

The base medium for this cell line is ATCC-formulated F-12K Medium, Catalog No. 30-2004. To make the complete growth medium, add the following components to the base medium: fetal bovine serum to a final concentration of 10%.

**2. Subculturing**

- 1) Remove and discard culture medium.
- 2) Briefly rinse the cell layer with 0.25% (w/v) Trypsin- 0.53 mM EDTA solution to remove all traces of serum which contains trypsin inhibitor.
- 3) Add 2.0 mL of Trypsin-EDTA solution to flask and observe cells under an inverted microscope until cell layer is dispersed (usually within 2 to 5 minutes). **Note:** To avoid clumping do not agitate the cells by hitting or shaking the flask while waiting for the cells to detach. Cells that are difficult to detach may

be placed at 37°C to facilitate dispersal.

- 4) Add 6.0 to 8.0 mL of complete growth medium and aspirate cells by gently pipetting.
- 5) Add appropriate aliquots of the cell suspension to new culture vessels.
- 6) Incubate cultures at 37°C.

**Subcultivation Ratio:** A subcultivation ratio of 1:3 to 1:5 is recommended.

**Medium Renewal:** Once or twice between subculture.

### 3. Cryopreservation

Freeze medium: 70% Complete growth medium, 20% FBS , 10 % (V/V) DMSO

Storage temperature: liquid nitrogen vapor phase

### 4. Culture Conditions

Temperature: 37°C,

CO<sub>2</sub> : 5%

#### ■ Limited Use License Agreement

This is a legal agreement between you (Licensee) and Fubio (Suzhou) Biotechnology Co., Ltd governing use of Fubio' s stable cell line products and protocols provided to licensee. By purchasing and using the stable cell line, the buyer agrees to comply with the following terms and conditions of this label license and recognizes and agrees to such restrictions:

- 1) The products are not transferable and will be used at the site where they were purchased. Transfer to another site owned by buyer will be permitted only upon written request by buyer followed by subsequent written approval by Fubio.
- 2) The purchaser cannot sell or otherwise transfer (a) this product (b) its components or (c) materials made using this product or its components to a third party.
- 3) The products sold by Fubio are for laboratory and animal research purposes only. The products are not to be used on humans, for consumption, or for any unlawful uses.