

Human Recombinant CD27 Stable Cell Line

Cat. No.: FCC-121

■ Introduction

Cell Line Name:	CHO-K1/CD27
Gene Synonyms:	T14; S152; Tp55; TNFRSF7; S152. LPFS2
Expressed Gene:	CD27
Host Cell:	CHO-K1, (ATCC® CCL-61™)
Quantity:	Two vials of frozen cells ($>1 \times 10^6$ cells/vial)
Application:	Binding assay or use as immunogen
Cryopreservation Medium:	70% Complete growth medium, 20% FBS, 10% (V/V) DMSO
Complete Growth Medium:	F12K, 10% FBS
Drug Screening:	12 μ g/ml Puromycin
Mycoplasma Contamination:	Not detected
Storage:	Liquid nitrogen immediately upon receipt

■ Background

The protein encoded by this gene is a member of the TNF-receptor superfamily. This receptor is required for generation and long-term maintenance of T cell immunity. It binds to ligand CD70, and plays a key role in regulating B-cell activation and immunoglobulin synthesis. This receptor transduces signals that lead to the activation of NF-kappaB and MAPK8/JNK. Adaptor proteins TRAF2 and TRAF5 have been shown to mediate the signaling process of this receptor. CD27-binding protein (SIVA), a proapoptotic protein, can bind to this receptor and is thought to play an important role in the apoptosis induced by this receptor.

■ **Representative Data**

Protein Expression Validation

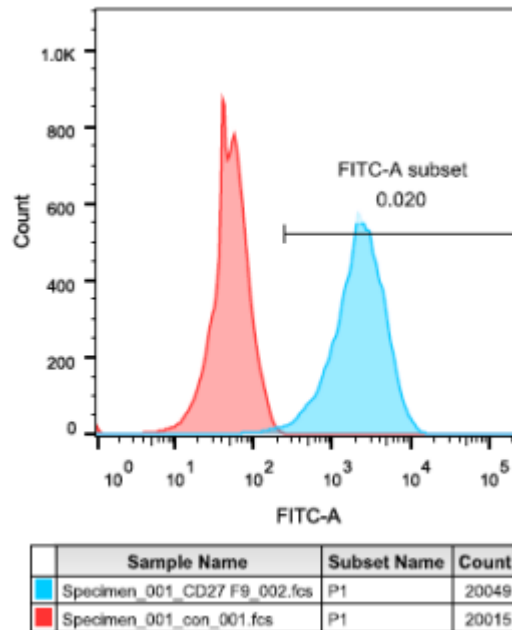


Figure 1: FACS analysis of CD27 expression in CHO-K1/CD27 cells

■ **Cell Culture Procedure**

1. Complete Growth Medium

The base medium for this cell line is ATCC-formulated F-12K Medium, Catalog No. 30-2004. To make the complete growth medium, add the following components to the base medium: fetal bovine serum to a final concentration of 10%.

2. Subculturing

- 1) Remove and discard culture medium.
- 2) Briefly rinse the cell layer with 0.25% (w/v) Trypsin- 0.53 mM EDTA solution to remove all traces of serum which contains trypsin inhibitor.
- 3) Add 2.0 mL of Trypsin-EDTA solution to flask and observe cells under an inverted microscope until cell layer is dispersed (usually within 2 to 5 minutes). **Note:** To avoid clumping do not agitate the cells by hitting or shaking the flask while waiting for the cells to detach. Cells that are difficult to detach may be placed at 37°C to facilitate dispersal.

- 4) Add 6.0 to 8.0 mL of complete growth medium and aspirate cells by gently pipetting.
- 5) Add appropriate aliquots of the cell suspension to new culture vessels.
- 6) Incubate cultures at 37°C.

Subcultivation Ratio: A subcultivation ratio of 1:3 to 1:5 is recommended.

Medium Renewal: Once or twice between subculture.

3. Cryopreservation

Freeze medium: 70% Complete growth medium, 20% FBS , 10 % (V/V) DMSO

Storage temperature: liquid nitrogen vapor phase

4. Culture Conditions

Temperature: 37°C,

CO₂ : 5%

■ Limited Use License Agreement

This is a legal agreement between you (Licensee) and Fubio (Suzhou) Biotechnology Co., Ltd governing use of Fubio's stable cell line products and protocols provided to licensee. By purchasing and using the stable cell line, the buyer agrees to comply with the following terms and conditions of this label license and recognizes and agrees to such restrictions:

- 1) The products are not transferable and will be used at the site where they were purchased. Transfer to another site owned by buyer will be permitted only upon written request by buyer followed by subsequent written approval by Fubio.
- 2) The purchaser cannot sell or otherwise transfer (a) this product (b) its components or (c) materials made using this product or its components to a third party.
- 3) The products sold by Fubio are for laboratory and animal research purposes only. The products are not to be used on humans, for consumption, or for any unlawful uses.